

# MONTHLY MEMBERSHIP PROGRESS REPORT

LOCATION SOUTH DAKOTA

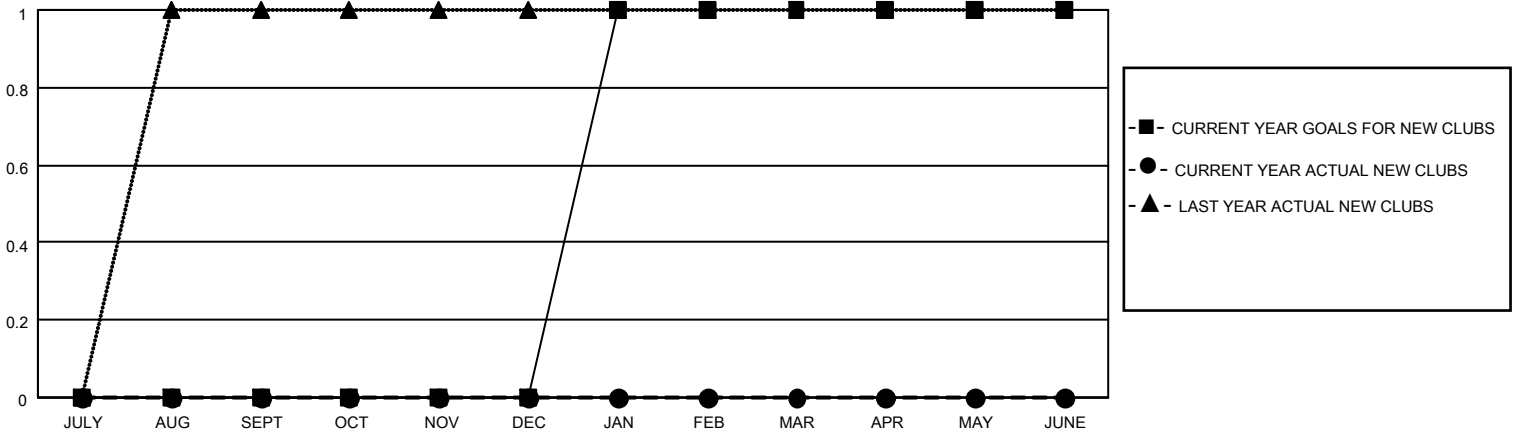
District 5 SE

Results as of: 3/31/2022

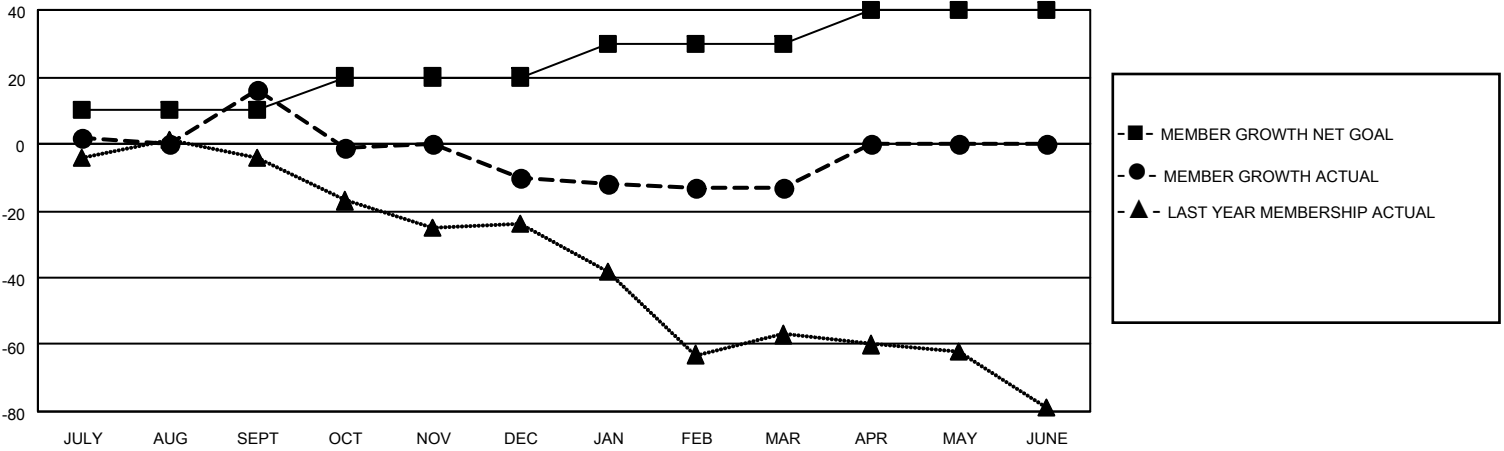
Clubs			
RESULTS FOR 2021-2022			
QUARTER	NEW CLUB GOAL	NEW CLUBS	DROPPED CLUBS
JULY/AUG/SEPT	0	0	0
OCT/NOV/DEC	0	0	1
JAN/FEB/MAR	1	0	0
APR/MAY/JUNE	0	0	0

Members			
RESULTS FOR 2021-2022			
QUARTER	MEMBER GROWTH NET GOAL	MEMBER GROWTH ACTUAL	DROPPED MEMBERS ACTUAL (including transfers)
JULY/AUG/SEPT	10	45	28
OCT/NOV/DEC	10	21	44
JAN/FEB/MAR	10	14	17
APR/MAY/JUNE	10	0	0

**GOALS AND ACTUAL NEW CLUBS CUMULATIVE**



**GOALS AND ACTUAL MEMBERS CUMULATIVE**



**DROPPED CLUBS: 1**

**24 CLUBS OF 41 ADDED 1 OR MORE NEW MEMBERS**

**GENDER DISTRIBUTION**

MALE	712 (67.94%)
FEMALE	336 (32.06%)
NON BINARY	0 (0.00%)
PREFER NOT TO ANSWER	0 (0.00%)

**DROPPED MEMBERS**

[CLICK HERE FOR CUMULATIVE MEMBERSHIP DATA](#)

DECEASED	14
CLUB CANCELLED	14
OTHER	61
<b>TOTAL</b>	<b>89</b>

TOTAL FAMILY UNIT MEMBERS	174
FAMILY MEMBERS PAYING HALF DUES	87